



# ACQUIRED BRAIN INJURY IRELAND

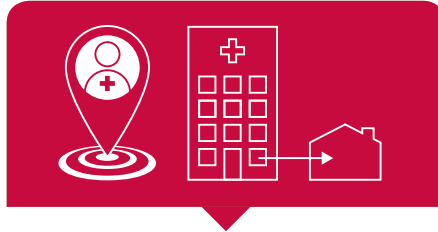
## Pre-budget Submission 2021

Acquired Brain Injury Ireland is seeking a **€510,000** allocation in Budget 2021 for a nationwide Acquired Brain Injury (ABI) Case Management Service. This would provide 7.5 case managers and a basic service across the country.

### THE VITAL ROLE OF CASE MANAGERS FOR BRAIN INJURY



A highly skilled professional trained specifically to work with people with brain injury and their families

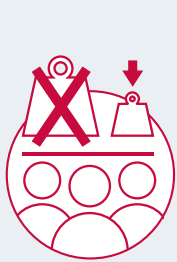


A single point of contact to help a person with brain injury navigate the pathway from hospital to home



Educates the family on ABI

#### WHAT THE RESEARCH SAYS ABOUT CASE MANAGEMENT



It reduces the burden of care on families



It saves money



It maximises the person's independence



It ensures that unnecessary and expensive stays in hospital are avoided

#### SAVINGS PER AREA IN ONE YEAR

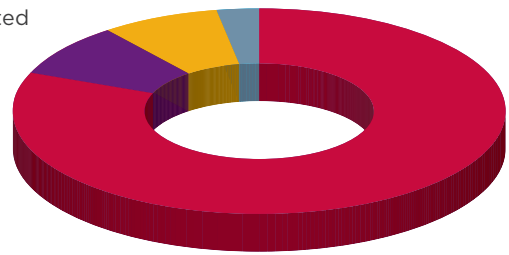
Research in the North East of Ireland revealed huge savings for the health service of €3.5m.

**€284,112**

Nursing Home Admission Prevented

**€100,232**

Reduced Level of Support Needed



**€311,060**

Nursing Home Discharge Facilitated

**€3,016,482**

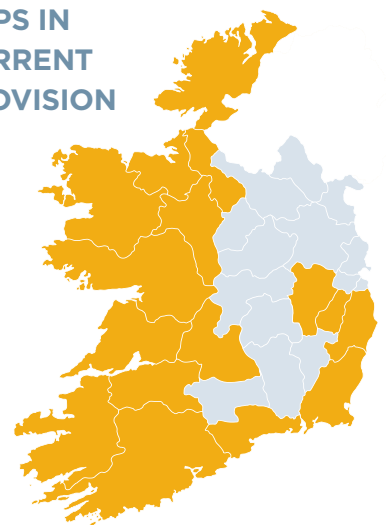
Hospital Discharge Facilitated

Whelan, D. (2010) An evaluation of the cost effectiveness of Acquired Brain Injury Ireland Case Management in the North East Area (Meath, Cavan/Monaghan and Louth). Unpublished MA thesis, Institute for Public Administration

#### ACQUIRED BRAIN INJURY IRELAND IS REQUESTING INVESTMENT IN CASE MANAGERS IN THE FOLLOWING AREAS:

HSE CHO	COUNTIES	WHOLE TIME EQUIVALENT
Area 1	Sligo, Donegal, Leitrim, West Cavan	1
Area 2	Galway, Roscommon and Mayo	1
Area 3	Clare, Limerick, North Tipperary, East Limerick	1
Area 4	Kerry, North Cork, North Lee, South Lee, West Cork	1
Area 5	South Tipperary, Carlow/Kilkenny, Waterford, Wexford	2
Area 6	Wicklow, Dun Laoghaire, Dublin South East	.5
Area 7	Kildare, West Wicklow, Dublin West, Dublin South city, Dublin South West	.5
Area 9	Dublin North, North Central, Dublin North West	.5
<b>TOTAL WTE</b>		<b>7.5</b>
<b>FUNDING REQUIRED</b>	PAY AND NON PAY	<b>€510,000</b>

#### GAPS IN CURRENT PROVISION



■ Counties with service  
■ Counties without service

